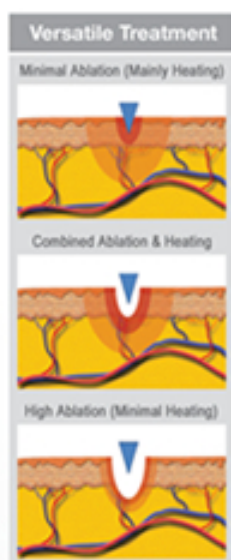


### VERSATILE FRACTIONAL SKIN RESURFACING

The Fractora skin resurfacing treatment is the first bipolar radio-frequency fractional treatment. Fractora provides dramatic skin and wrinkle improvement by fractionally ablating the skin and restructuring deeper tissue.

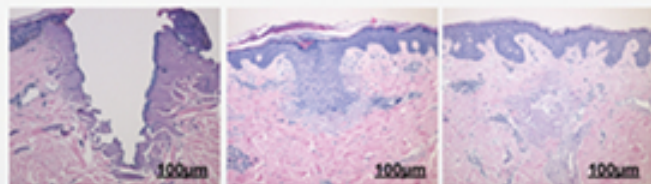


### SCIENCE AND TECHNOLOGY

Fractora delivers bipolar RF energy to the skin through an array of pin electrodes with an ablation zone that can vary from 100 microns up to 1 mm. RF current flows between the pins creating zones of ablation, coagulation and heating. The gentle heating of sub-dermal tissue promotes collagen restructuring for a deep treatment effect. The untreated skin around the ablation zones promotes fast healing of the micro-lesions to minimize patient down time.

### SOLID CLINICAL PROOF

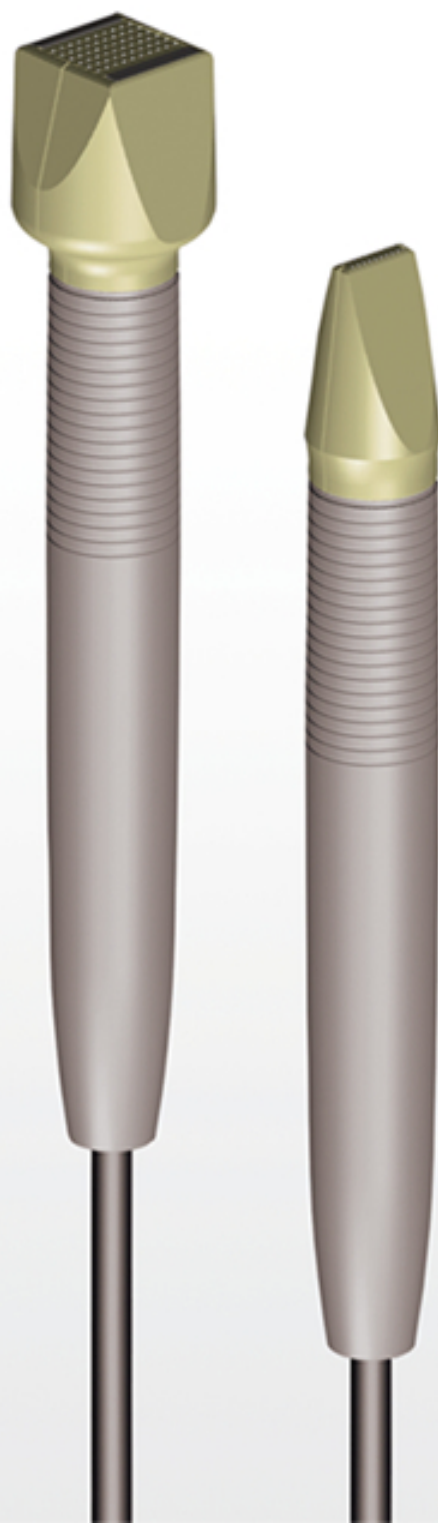
Histological studies show that skin ablation can reach a depth of 1mm with a coagulation zone of up to 100 microns around the crater. In combination with deep dermis heating this provides dramatic improvement of fine lines, deep wrinkles, skin tone and texture.



A deep ablation crater surrounded by coagulated tissue immediately after treatment.

Active phagocytosis indicates healing at 5 days post treatment.

New restructured collagen is observed in the deep dermis at 14 days post treatment.



# Fractora™

## Fractional Handpieces

### BENEFITS

- Versatility of parameters allows the user to vary the depth of ablation, coagulation and heating.
- Versatility of settings enables the practitioner to mimic aggressive fractional CO<sub>2</sub>, fractional Erbium Yag or fractional IR laser tissue effects.
- Fractora allows the user to select different tip configurations for fast treatment of entire face or precise treatment of delicate areas such as the eyelids and upper lips.
- Fractora handpiece connects to the multifunctional Invasix device. This allows a practitioner to combine Fractora fractional resurfacing with other procedures, or for use on its own.

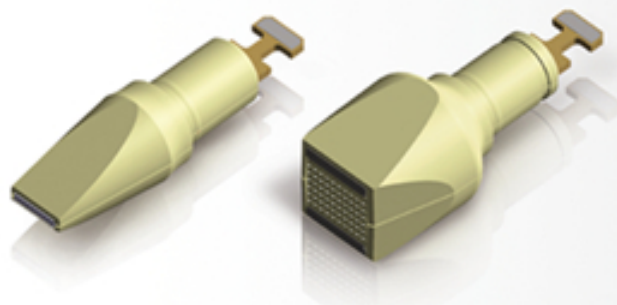
### Before



### After



Photos courtesy of Dr. Stephen Mulholland



### FRACTORA SPECIFICATIONS

Fractora Fractional Skin Resurfacing	Operates on Invasix Platform
Pin Configuration	Small – 10x2, 20 Pins Large – 10x6, 60 Pins
Input Power	100-240 VAC, 50-60 Hz, 1.5A
Size (H x W x D)	100 cm x 36 cm x 36 cm [39" x 15" x 15"]
Weight	15 Kg [33 lbs.]
Maximum Output Energy	62 mJ/pin
Output Frequency	1MHz