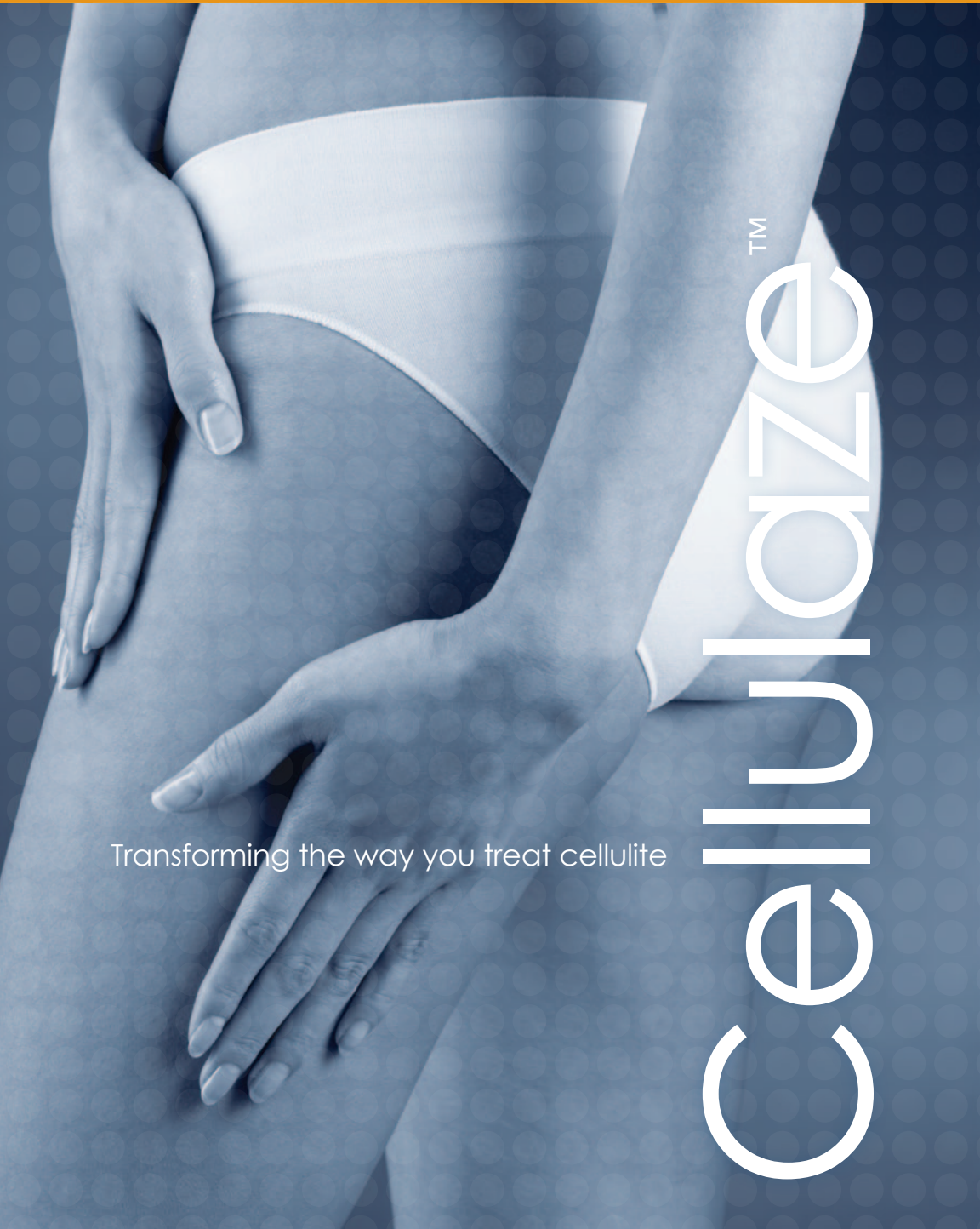
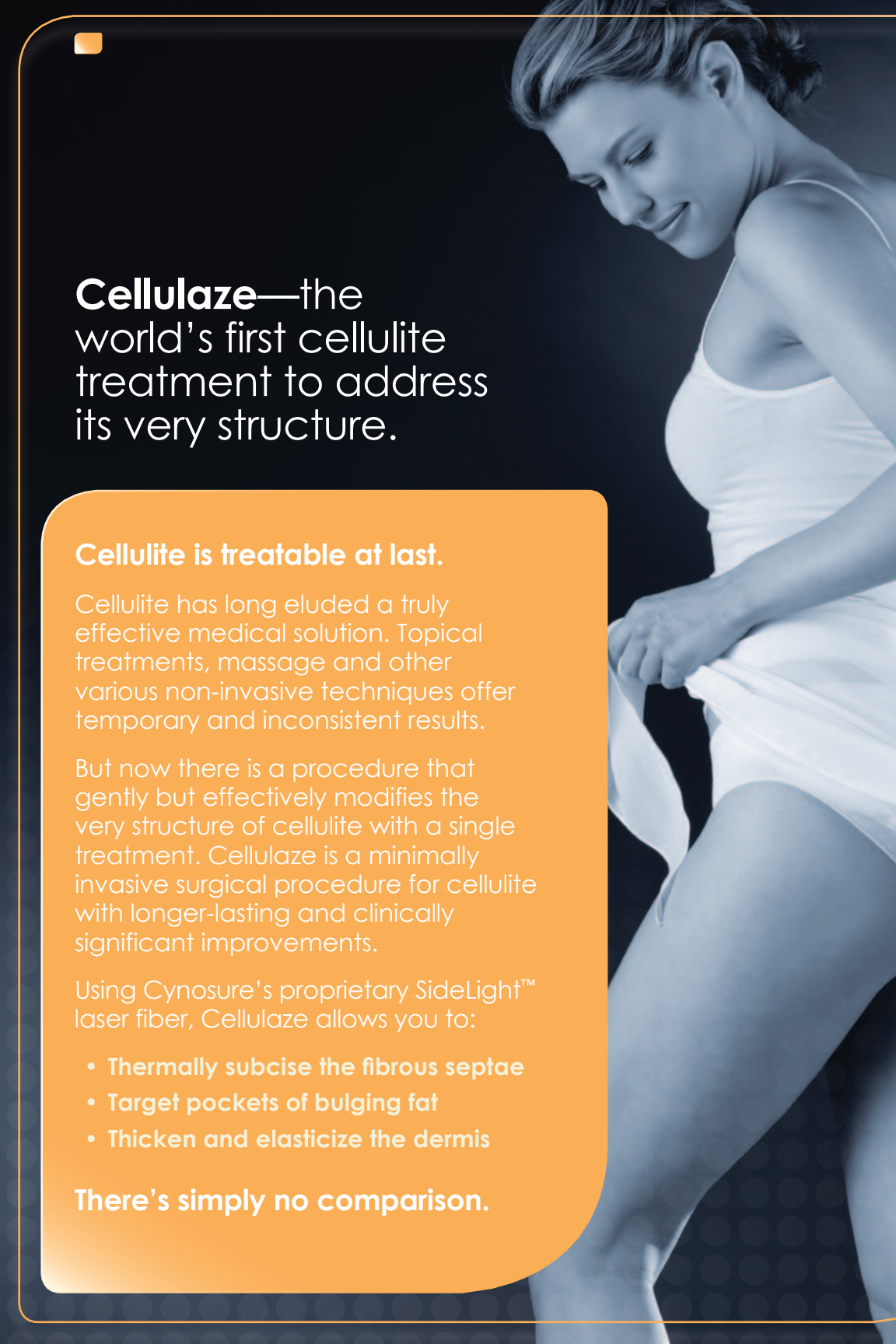


CYNOSURE®

Cellulaze™

Transforming the way you treat cellulite





**Cellulaze**—the world's first cellulite treatment to address its very structure.

### **Cellulite is treatable at last.**

Cellulite has long eluded a truly effective medical solution. Topical treatments, massage and other various non-invasive techniques offer temporary and inconsistent results.

But now there is a procedure that gently but effectively modifies the very structure of cellulite with a single treatment. Cellulaze is a minimally invasive surgical procedure for cellulite with longer-lasting and clinically significant improvements.

Using Cynosure's proprietary SideLight™ laser fiber, Cellulaze allows you to:

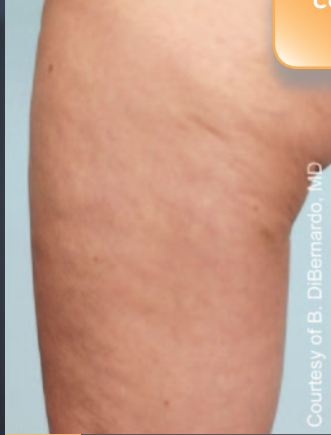
- **Thermally subcise the fibrous septae**
- **Target pockets of bulging fat**
- **Thicken and elasticize the dermis**

**There's simply no comparison.**

With Cellulaze – you'll discover a dramatic new approach to treating cellulite.



Before



After Post 2 Years

Courtesy of B. DiBernardo, MD

Where else can you see results like this at 2 years post-op after one treatment?



Before



After Post 1.5 Years

Courtesy of B. DiBernardo, MD



Before



After Post 6 Months

Courtesy of B. DiBernardo, MD



# Cellulaze™

Cellulite Laser Workstation

## Proven to yield consistent results after just one treatment

Cellulaze is the only minimally invasive surgical cellulite treatment.

Safer? Yes. Minimally invasive? Certainly. More effective? Cellulaze has documented proof that just one single treatment results in:<sup>1</sup>

- Measurable improvement to cellulite's appearance
- Improvement that lasts 12 months or more
- Consistently high levels of patient satisfaction

For the first time, Cellulaze makes it feasible and practical for you to focus your surgical skill on cellulite. Treat what was once considered untreatable—and give your patients the consistent results they have been searching for.



Cellulite isn't just a fat problem it's a structural problem below the skin, so why do so many cellulite treatments focus on treating fat from above the skin?

Only Cellulaze addresses cellulite's very architecture—surgically and, evidence shows, decisively—as part of a truly innovative yet simple mechanism of action.

# How Cellulaze



Only Cellulaze uses Cynosure's proprietary SideLight side-firing fiber technology, which allows for more precise tissue targeting. The Cellulaze mechanism of action uses a 1440 nm Nd:YAG wavelength exclusively and occurs in three ways:

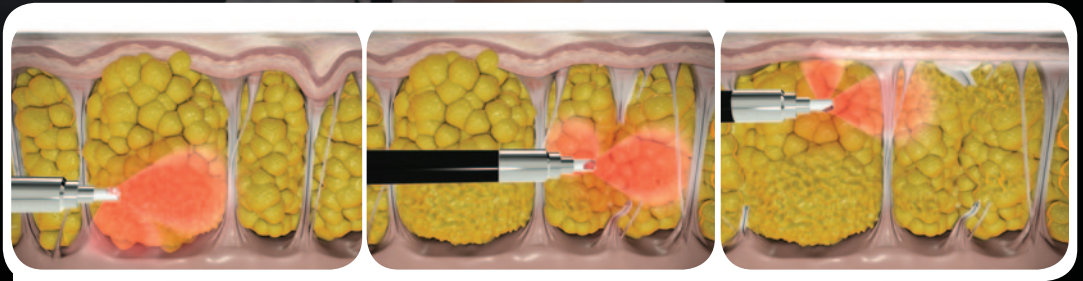
**ThermaGuide™ Intelligent Delivery System helps you:**

**Precisely determine your endpoint with integrated temperature sensing to achieve more uniform results.**



Ultrasound imaging measurements demonstrated an average 25% increase in skin thickness.<sup>1</sup>

# How It Works: The Sidelight Tech



1

## TARGET BULGING POCKETS OF FAT

- SideLight fiber is re-oriented to target pockets of herniated fat

2

## THERMAL SUBCISION OF FIBROUS SEPTAE

- Using the SideLight laser fiber, fibrotic septae are thermally subcised

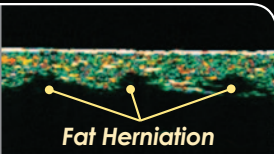
3

## TISSUE TIGHTENING<sup>1</sup>

- Energy is delivered to the hypo dermal junction to thicken skin and increase skin elasticity

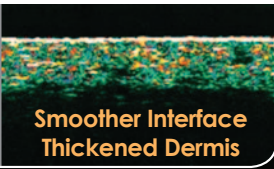
BASELINE

Dermis  
Hypodermis



3 M POST

Dermis  
Hypodermis



# nique



## POST-TREATMENT

### Re-Growth Leads To Flattening And Smoothing

In the weeks and months following Cellulaze treatment, septae re-grow in new locations while new collagen leads to thicker and more elastic skin. These developments can help **flatten the skin and smooth the skin surface, dramatically improving the appearance of cellulite.**

## Clinically Proven, Patient-Preferred

Cellulaze has been thoroughly evaluated to ensure safer and more effective results.

Clinical study data showed:

- A single Cellulaze treatment improved the appearance of cellulite for one year with minimal side effects
- 29% average increase in skin elasticity at one year post-op when compared to baseline.<sup>1</sup>

## High Patient Satisfaction

Patient satisfaction was found to be very high at 1 year post op and side effects were minimal:

- **92.5%** satisfaction rate<sup>1</sup>

System Type	Nd:YAG
Wavelength	1440nm
Pulse Width (Max)	1000µs
Power Output Options	10W
Max Rep Rate	25Hz
Aming Beam	Red
Electrical Requirements	230 VAC/16A
Size (HxWxD)	37.4" x 19.7" x 25.6" (95cm x 50cm x 65cm)
Weight	220 lbs (100kg)

Are you ready to perform the one cellulite treatment that attacks its very structure?

Please contact your Cellulaze Surgical Laser Consultant at 800.886.2966 or visit [www.cynosure.com](http://www.cynosure.com).

**Footnotes and References:**

- 1 DiBernardo, BE "Treatment of Cellulite with One Year Follow-up using a 1440nm pulse laser" Aesthetic Surgery Journal, March 2011



[www.cynosure.com](http://www.cynosure.com)

**CORPORATE HEADQUARTERS**

**United States**

Cynosure, Inc.  
5 Carlisle Road  
Westford, MA 01886 USA  
Tel: 978.256.4200  
Toll-Free: 800.886.2966

